


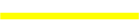




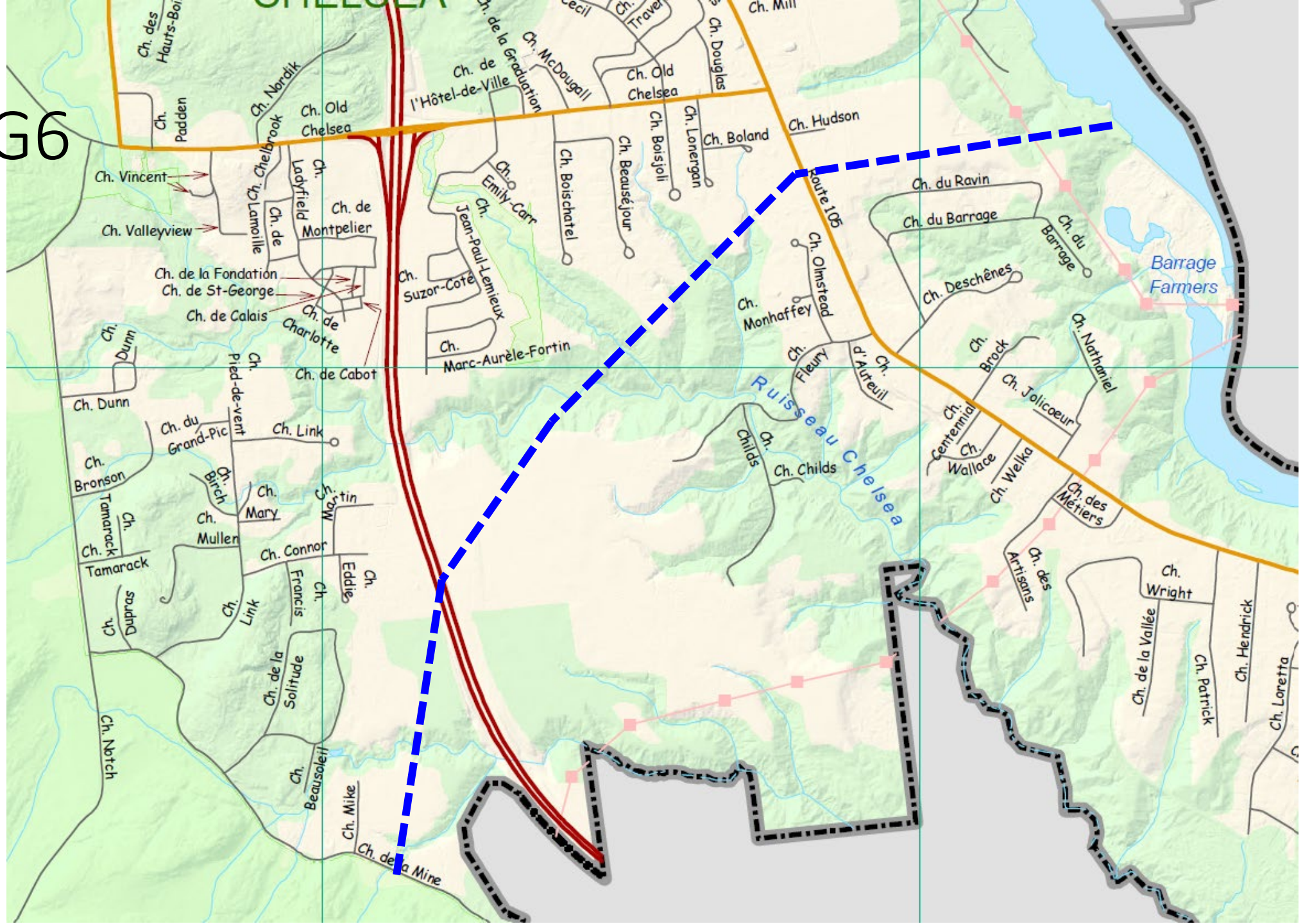
S.v.p. nommer la carte l'annexe E et lui donner le titre de « PLAN DU RÉSEAU DE TRANSPORT ROUTIER ET DE TRANSPORT ACTIF »

Légende de ce document:

- ... AUTOROUTE
- ...CHEMIN ARTÉRIEL
- ...CHEMIN COLLECTEUR PRINCIPAL
- ...CHEMIN COLLECTEUR DE QUARTIER
- ...CHEMIN PROJETÉ **local**
- ...AUTOROUTE PROJETÉE

Mais dans la nouvelle carte, je t'invite à sélectionner des couleurs qui s'agencent bien selon toi.

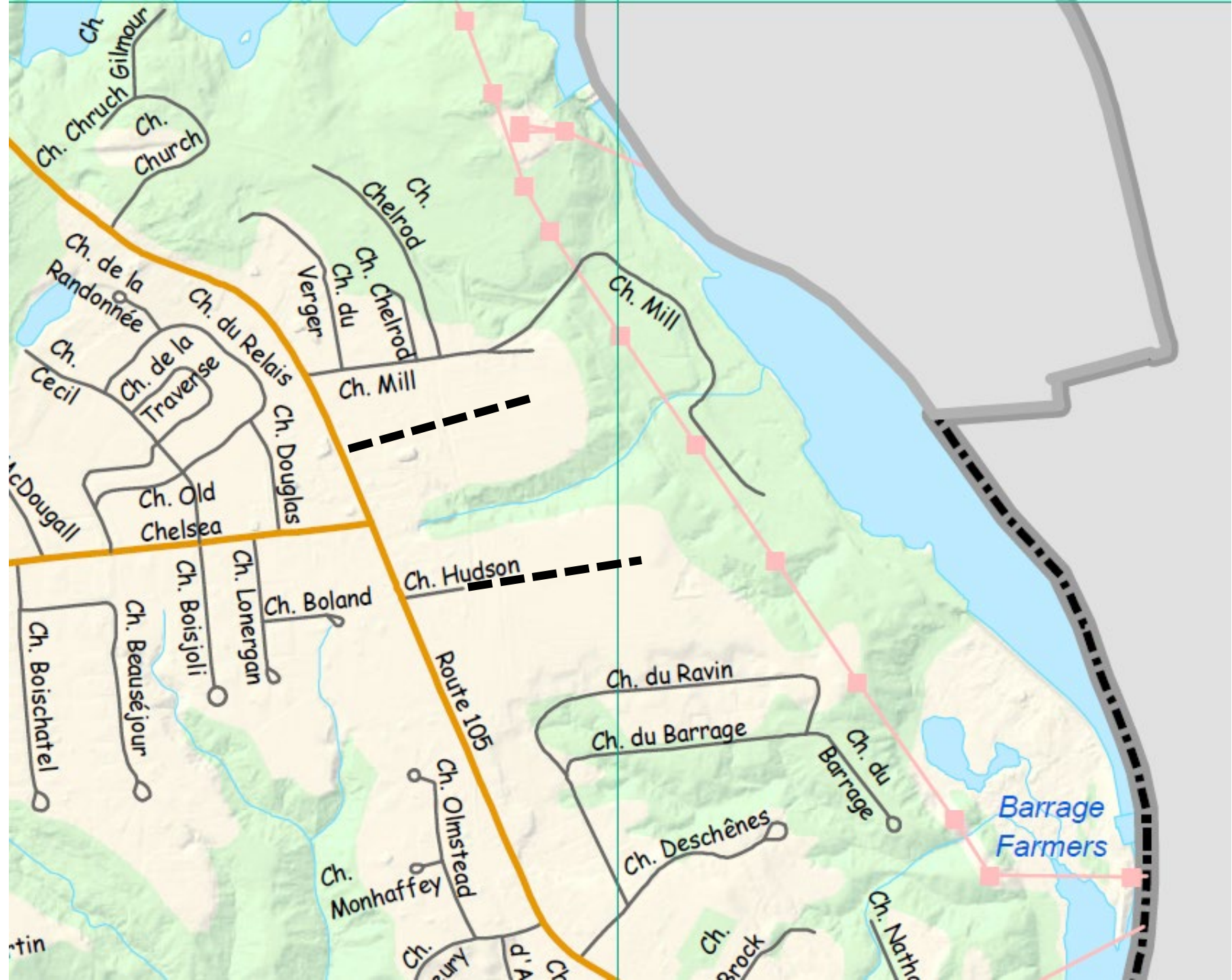
H6 et G6



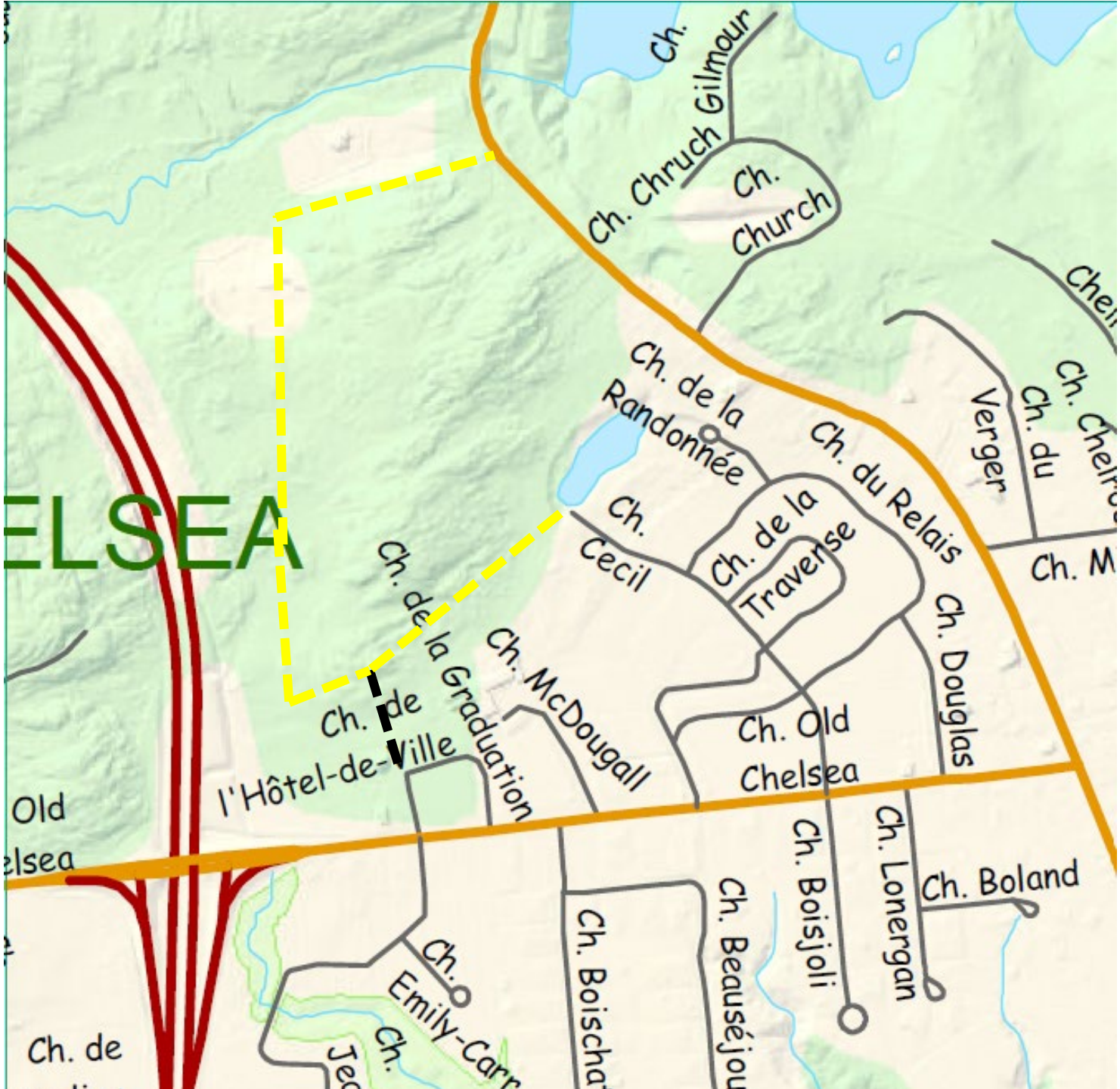
H7



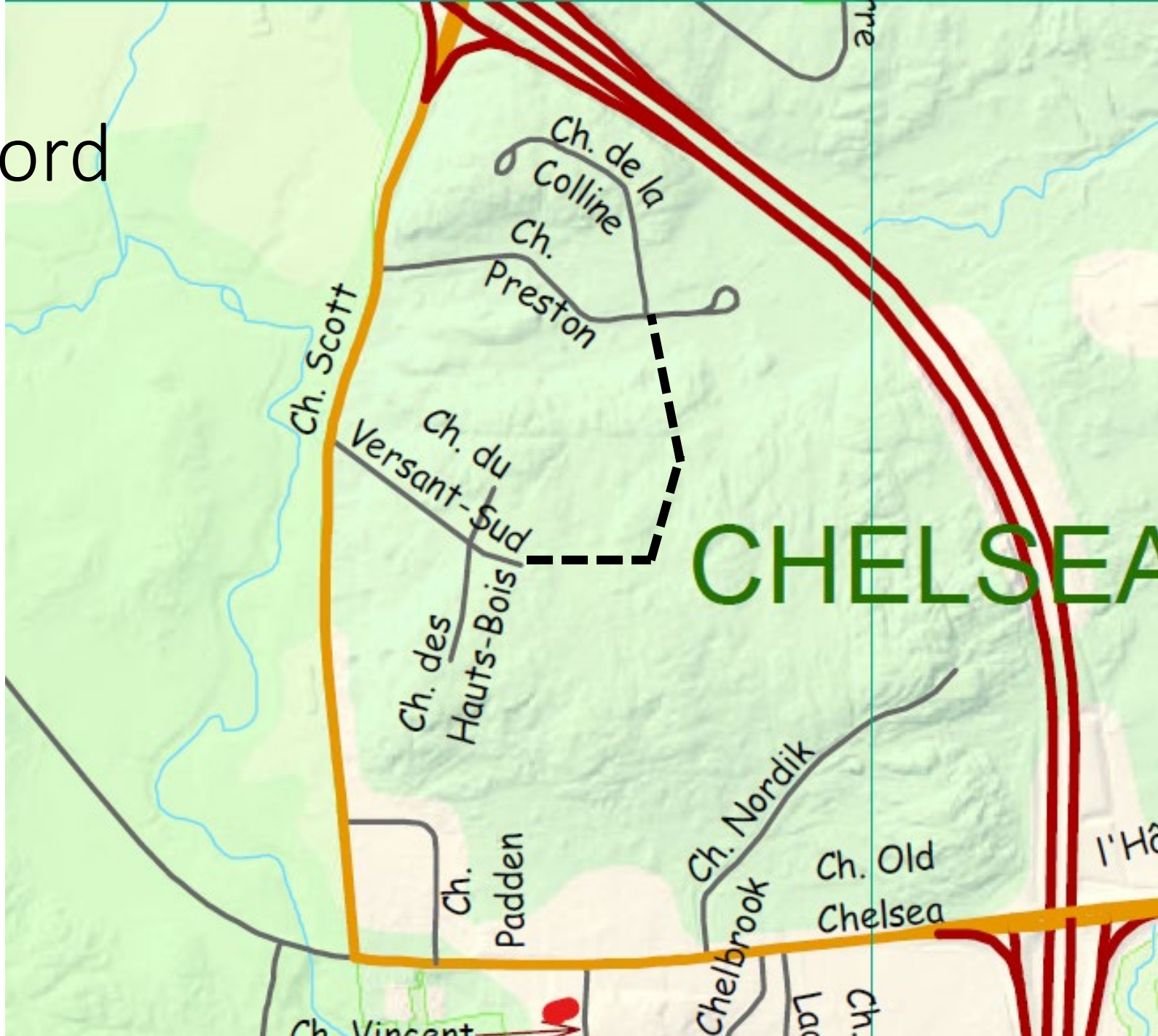
G6-G7



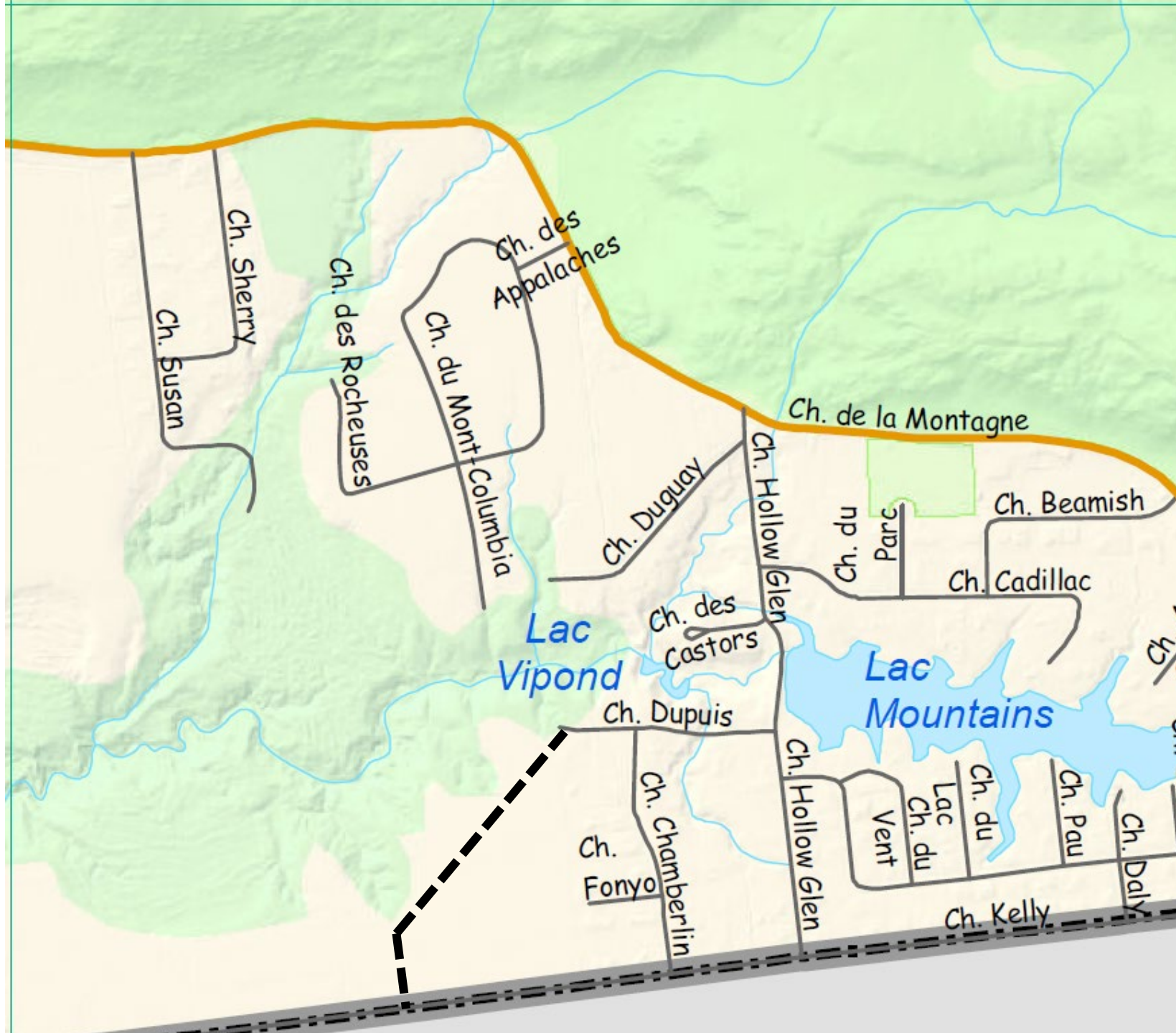
G6



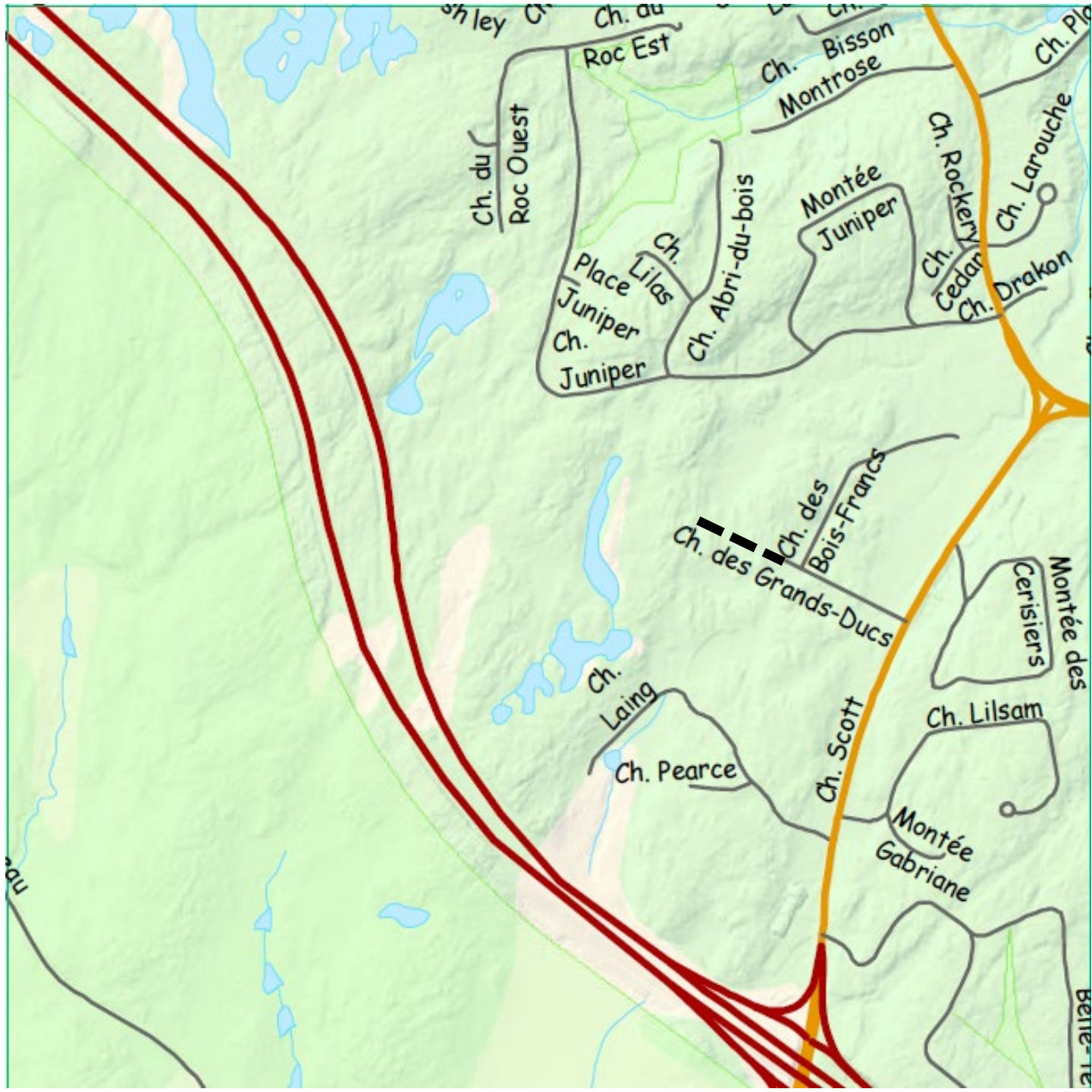
G5- nord



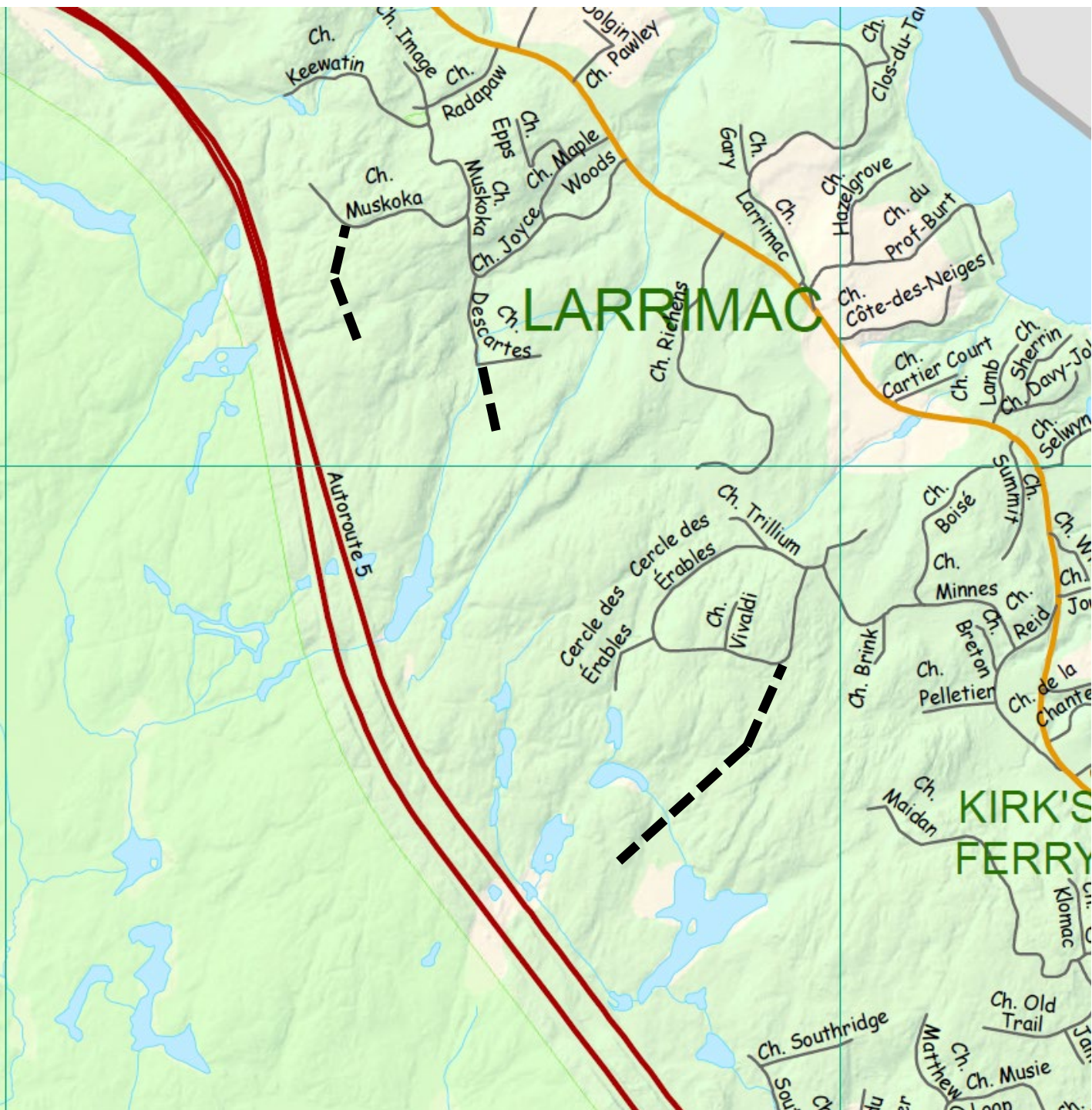
H2



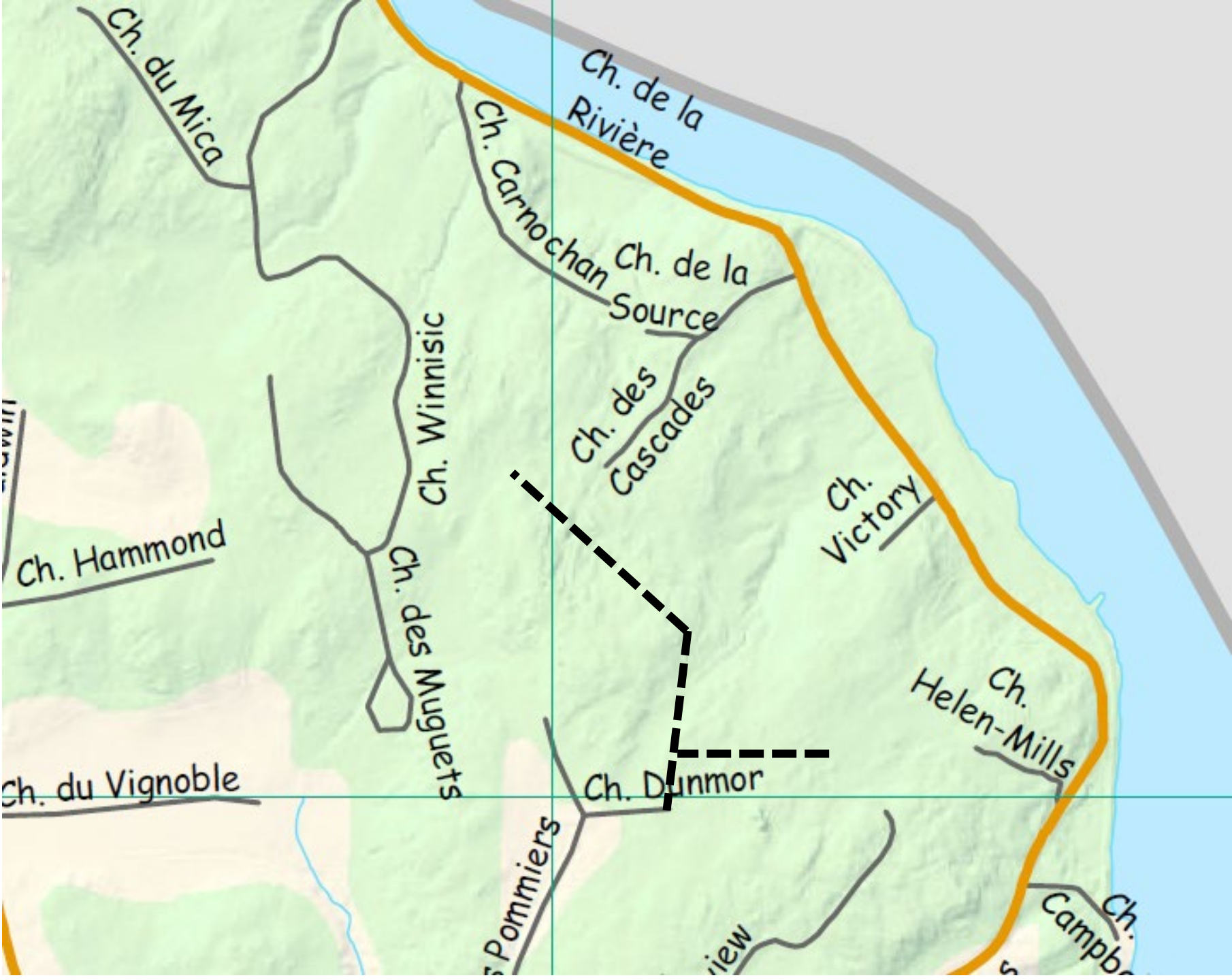
F5



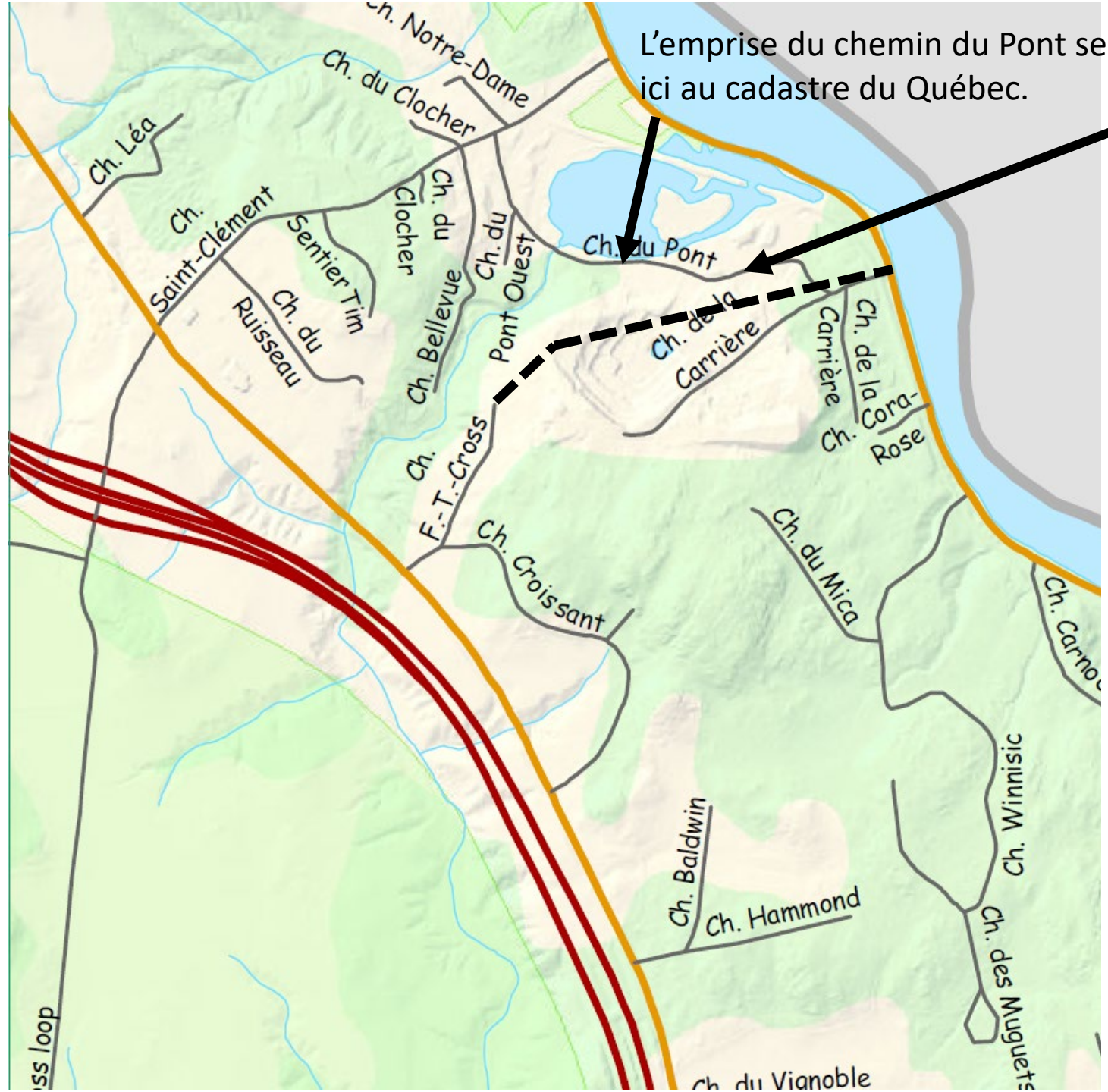
D3-E3



B3



B2



L'emprise du chemin du Pont se termine environ ici au cadastre du Québec.

Ce prolongement du chemin du Pont est-il un droit de passage enregistré?

A2-B2



FARM POINT